

*Customised  
interior organisers  
for your Nolte or  
nolteneo kitchen*



**Everything  
organised  
in your kitchen.**

**nolte**<sup>®</sup>  
KÜCHEN



## **CONTENTS**

### **PLANNING YOUR KITCHEN**

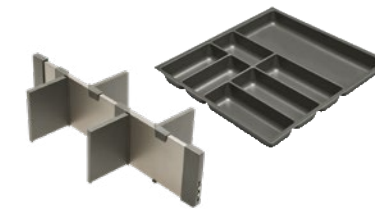
Everything in its place – Maximum storage space perfectly organised .....	4
Everything in easy reach – For easy uninterrupted work flows .....	6
Everything where you need it – For tidy item storage .....	8

### **INTRODUCTION TO OUR PRODUCT RANGE**

The right options for every style and budget .....	10
Everything in a set – All-inclusive sets for your pull-out unit or sets for drawers and pull-outs .....	12
Everything tailored – Individual components put together to suit your needs .....	14

### **OUR COMMITMENT**

Sustainability as a guiding principle at Nolte Küchen .....	39
---	----



### **QUARTZ GREY PLASTIC**

Full organisers .....	16
-----------------------	----



### **BLACK PLASTIC**

Full organisers .....	18
-----------------------	----



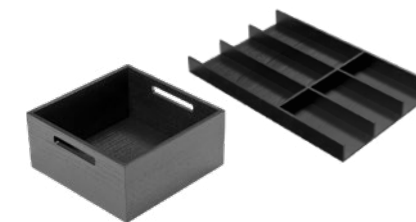
### **SOLID BEECH WOOD**

Full organisers .....	19
-----------------------	----



### **SOLID OAK WOOD**

Full organisers .....	20
Segmented organisers .....	22



### **SOLID ASH WOOD, BLACK**

Segmented organisers .....	24
----------------------------	----



### **nolte neo. EQUIPMENT**

Black plastic .....	30
Solid ash wood, black.....	32
T.I.O. in marble look .....	36



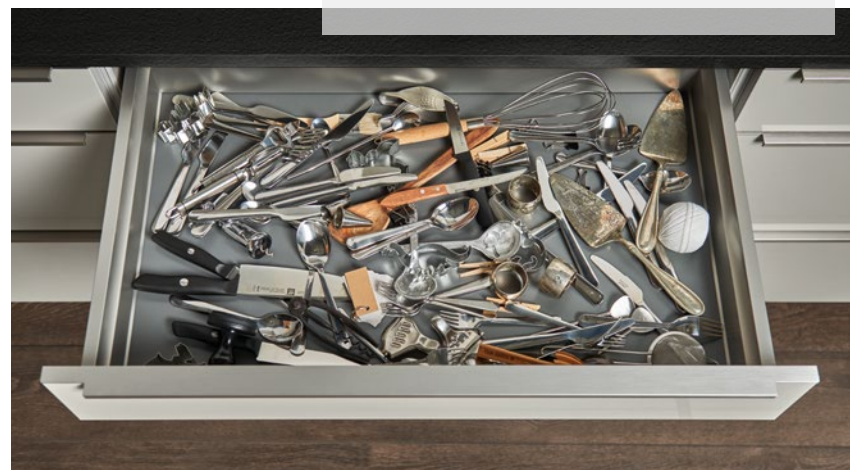
# Everything in its place

MAXIMUM STORAGE SPACE  
PERFECTLY ORGANISED.

Whether you've already selected your Nolte kitchen or are still planning it: Besides an appealing look, high-quality features, generous storage space and carefully considered details, the interior too is so incredibly important. Nolte Küchen has a wide range of products for you, to perfectly structure your drawers and pull-outs. With our products, there's a place for everything, walking distances in the kitchen are short and work flows are smooth.

We suggest planning how exactly you would like to use your kitchen ahead of time so that each functional area can be set up in the most helpful way. For instance, store fresh food near the sink and the waste bin so that you can dispose of any food waste quickly and efficiently. Likewise, it is best to keep cooking utensils near the hob so that they are within easy reach.

LESS CHAOS? THAT  
CAN BE ORGANISED!



*“Organisation is when  
you always know  
where you don't even  
have to look.”*

Netty Neuthal





### SAVE TIME WITH SMART KITCHEN ORGANISATION

Store your vegetables near the sink and waste separation system. This lets you wash your vegetables right when you get them out and immediately dispose of any food waste without having to walk any extra distances.



# Everything in easy reach

FOR EASY UNINTERRUPTED WORK FLOWS.

When cooking, you don't want your food preparation to come to a halt because you suddenly need to look for something important. Ingredients and cooking utensils should always be at hand without having to think where to find them. Clever interior organisers from Nolte Küchen provide fast access and make cooking more pleasurable.



### SPICES AND OILS READY TO HAND

Salt, pepper, vinegar, oil, – there are some ingredients that always have to be ready to hand when cooking. Pull-outs and drawers to the right, left and underneath the cooker are the ideal storage space. Kept there, utensils are quickly to hand and put away again. And you can always keep an eye on your food.





# Everything where you need it

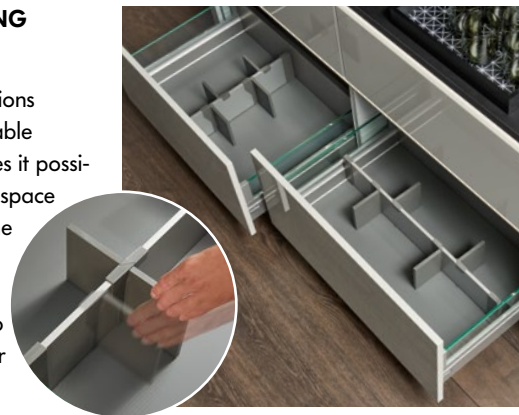
FOR TIDY ITEM STORAGE.

Convenient pull-outs are a particularly great space for your supplies and kitchen utensils: Just a glance from above and you know where everything is and can grab whatever you need.

Well-structured partitioning provides a place for everything. Cross and depth partitions, convenient boxes, all-purpose trays and function bases make sure that both large pots and small glasses are stored neatly and are within reach at all times. These intelligent solutions help you tidy your kitchen in next to no time and make it easy to store away or take out your kitchen utensils.

## VARIABLE PARTITIONING OF YOUR PULL-OUTS

The cross and depth partitions made of plastic using variable partitioning elements makes it possible to adapt your storage space precisely to your needs. The partitioning elements can be arranged in a line or offset to adapt perfectly to the space required by your supplies.



A depth partition divides your pull-out into up to five separate areas so that you can store a variety of food items and kitchen utensils in a neat and tidy way.



Practical boxes and all-purpose trays keep the pull-out neatly arranged so that e.g. foods such as onions, garlic and potatoes are always ready at hand in a neat storage space.



## FUNCTION BASES WITH SLOT-IN CROSS DIVIDERS

Function bases with individually adjustable slot-in cross dividers keep your dishes neatly organised. Pots and pans can easily be stored next to or on top of each other, while the matching lids are kept neatly arranged and ready to hand.





# The right options for every style and budget



Quartz grey PLASTIC



*Basic equipment: Cutlery inserts are available for each drawer width with a wide range of accessories and convenient cross and depth partitions for the pull-outs. Products on page 16*

Black PLASTIC



*Upgrade: These easy-to-clean interior organising elements offer a modern, stylish solution for your drawers and pull-outs. Combine an elegant look with great function. Products on page 18*

Solid BEECH wood



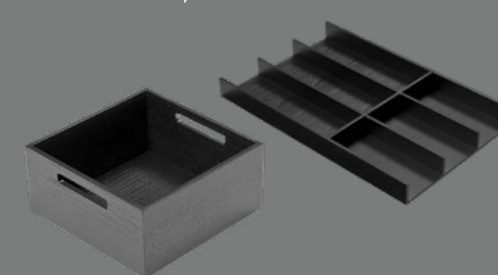
*Affordable wood: Inserts in solid beech wood offer a simple solution for keeping your kitchen drawers tidy and give your kitchen a warm and cosy look. These products are the ideal entry into wood design for price-conscious customers. Products on page 19*

Solid OAK wood



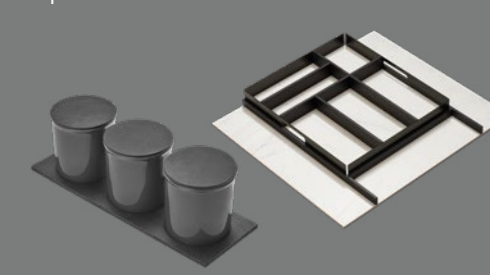
*Captivates with a look of natural authenticity: You can look forward to cutlery inserts for every drawer width as well as a wide range of pull-out accessories and equipment. The various elements can be combined in any way you choose. Products from page 20*

Solid ASH wood, black



*Particularly high in quality: You can choose from cutlery inserts for every drawer width, numerous pull-out accessories and a wide selection of customisable elements. Products from page 24*

Options NOLTENEO



*For design lovers: A versatile range of interior options is available for your nolteneo kitchen in a variety of materials and designs. Some of the accessories from the Nolte Küchen range can also be selected. Products from page 28*

## DESIGN FOR EVERY TASTE.

The choice is yours: Nolte Küchen offers you all sorts of different solutions, from basic accessories to options in classy solid wood. Define the interior organisation of your drawers and pull-outs in exactly the way you want. You can look forward to versatile interior organisers.



# Everything IN A SET

## ALL-INCLUSIVE SETS FOR YOUR PULL-OUT UNIT ...

You like it simple and uncomplicated? If you do, then the all-inclusive sets for pull-out units are the right choice for you. This will give you a good basis to which you can add in any way you choose.



5

## ... OR INDIVIDUAL DRAWER AND PULL-OUT SETS.

Our drawer and pull-out sets give you a selection of the most practical and popular organisers in all materials.

### Example of an all-inclusive set (left):

Interior organisers all-inclusive set solid ash wood, black for your base unit with pull-outs, consisting of:

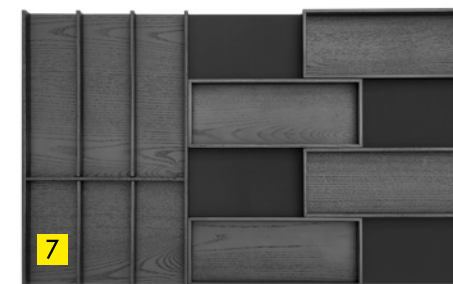
- 1 Drawer at the top
- 2 Pull-out in the middle
- 3 Pull-out at the bottom

### Examples of individual sets (top / right):

- 5 Cutlery insert solid oak wood / full organiser
- 6 Set 1 drawer solid oak wood / segmented organiser
- 7 Set 1 drawer solid oak wood / segmented organiser
- 8 Set 3 pull-out solid oak wood / segmented organiser



6



7



8

You will find a complete product overview from page 17 onward.



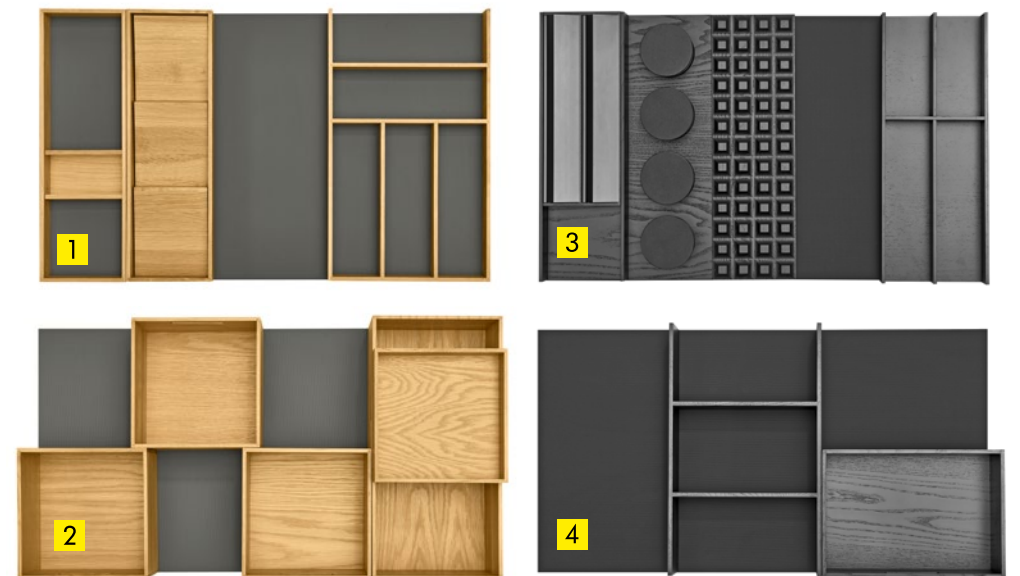


# Everything **TAILORED**

AND PUT TOGETHER TO SUIT YOUR NEEDS.

Find everything you need: you can choose from a wide range of individual interior organisation elements to configure your drawers and pull-outs in any way you wish. Put together your interior organisation yourself.

Examples of interior organisers put together to suit individual needs:



1 Anti-slip mat | Sliding insert for small items | Spice insert | Segment cutlery insert

2 Anti-slip mat | All-purpose tray 1 | 3 x box 1 | Box 2

3 Anti-slip mat | Foil unwinder | Spice insert set | Spice insert | Segment cutlery insert

4 Anti-slip mat | Depth partition | Box 3

You will find a complete product overview from page 17 onward.



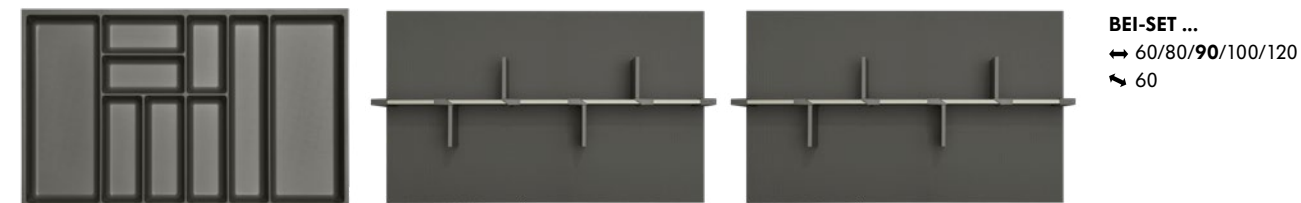


Basic equipment

# QUARTZ GREY PLASTIC

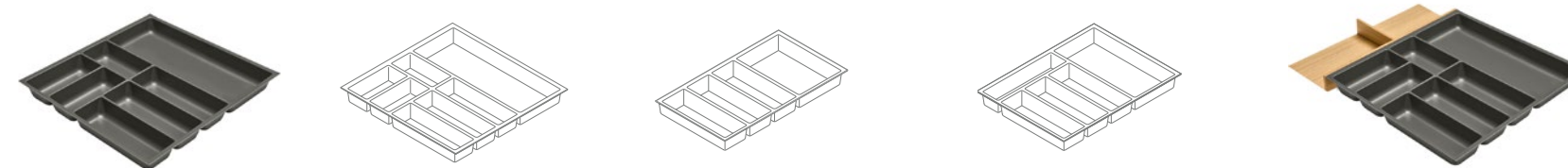
## FOR THE COMPLETE UNIT:

All-inclusive set interior organiser – for base units with 1 drawer and 2 pull-outs



**BEI-SET ...**  
↔ 60/80/90/100/120  
↵ 60

## FOR DRAWERS AND INTERIOR DRAWERS:



**Cutlery insert**

**BEI ...**  
↔ 30/40/45/50/60/80/90/100/120  
↵ 60

behind a side-hung door

**BEI ...-DR**  
↔ 40/45/50/60  
↵ 60

for carcase depth 39 cm

**BEI ...-39**  
↔ **60**/80/90/100/120  
↵ 39

for carcase depth 50 cm

**BEI ...-50**  
↔ 30/40/45/50/60/80/90/100/120  
↵ 50

for carcase depth 75 cm

**BEI ...-75**  
↔ 60/80/90/100/120  
↵ 75



**Cutlery insert set**

with spice insert  
**BEI ...-GEW**  
↔ 60/80/90/100/120  
↵ 60



with knife block

**BEI ...-MES**  
↔ 60/80/90/100/120  
↵ 60



with foil unwinder

**BEI ...-FOL**  
↔ 60/80/90/100/120  
↵ 60

**Individual elements** – Inserts in solid oak wood



Spice insert  
**BEI-GEW**



Knife block  
**BEI-MES**



Foil unwinder  
**BEI-FOL**

## FOR PULL-OUTS AND INTERIOR PULL-OUTS:



**Cross partition**

**AORP ...**  
↔ 30/40/45/50/60/80/90/100/120  
↵ 39/50/60/75

**Depth partition**

**AORP ...-T**  
↔ 30/40/45/50/60/80/90/100/120  
↵ 60/75

↔ Carcase width | ↵ Carcase depth  
**Bold** = image shown





Entry-level wood design

# SOLID BEECH WOOD

FOR DRAWERS AND INTERIOR DRAWERS:



**Cutlery insert**  
BE11H ...  
↔ 30/40/45/50/60/80/90/100/120  
↵ 60

Individual elements – Inserts in solid beech wood



Spice insert  
BE11H-GEW

Knife block  
BE11H-MES

Foil unwinder  
BE11H-FOL

Upgrade

# BLACK PLASTIC

FOR DRAWERS AND INTERIOR DRAWERS:



**Cutlery insert**  
BE11K ...  
↔ 30/40/45/50/60/80/90/100/120  
↵ 60

for carcass depth 75 cm  
**BE11K ...-75**  
↔ 60/80/90/100/120  
↵ 75

**Segment cutlery insert**  
BE11K-KT-50  
↔ from carcass width 45 cm  
↵ 50

FOR PULL-OUTS AND INTERIOR PULL-OUTS:



**Storage set with partition elements**  
AOR1K45-3T  
↔ from carcass width 45 cm  
↵ 60

**Storage set with storage jars**  
AOR1K45-3VG  
↔ from carcass width 45 cm  
↵ 60

Individual elements – Inserts in solid oak wood



Cutting board  
BE11K-SB

Knife block  
BE11K-MES

Foil unwinder  
BE11K-FOL

↔ Carcass width | ↵ Carcass depth  
**Bold** = image shown





Natural

# SOLID OAK WOOD

## Full organisers

Everything at a glance: Check out our convenient overview to see which all-inclusive sets, sets for drawers and pull-outs and individual elements made of solid oak wood might fit in your kitchen. You've made your choice? Then simply place your order.



### FOR THE COMPLETE UNIT:

All-inclusive set interior organiser – for base units with 1 drawer and 2 pull-outs

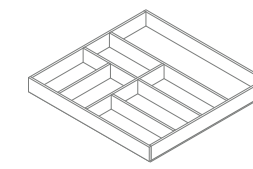


**BEI2H-SET ...**  
 ↔ 60/80/90/100/120  
 ↴ 60

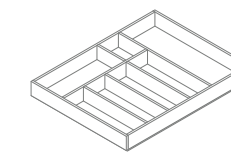
### FOR DRAWERS AND INTERIOR DRAWERS:



**Cutlery insert**  
**BEI2H ...**  
 ↔ 30/40/45/50/60/80/90/100/120  
 ↴ 60



behind a side-hung door  
**BEI2H ...-DR**  
 ↔ 40/45/50/60  
 ↴ 60



for carcass depth 50 cm  
**BEI2H ...-50**  
 ↔ 30/40/45/50/60/80/90/100/120  
 ↴ 50



for carcass depth 75 cm  
**BEI2H ...-75**  
 ↔ 60/80/90/100/120  
 ↴ 75



**Cutlery insert set**  
 with spice insert  
**BEI2H ...-GEW**  
 ↔ 60/80/90/100/120  
 ↴ 60



with knife block  
**BEI2H ...-MES**  
 ↔ 60/80/90/100/120  
 ↴ 60



with foil unwinder  
**BEI2H ...-FOL**  
 ↔ 60/80/90/100/120  
 ↴ 60

#### Individual elements – Inserts in solid oak wood



Spice insert  
**BEI2H-GEW**



Knife block  
**BEI2H-MES**



Foil unwinder  
**BEI2H-FOL**

### FOR PULL-OUTS AND INTERIOR PULL-OUTS:



**Depth partition**  
**AOR2H-LEI**  
 ↔ from carcass width 40 cm  
 ↴ 60



**Box 1**  
**AOR2H-BOX 1**  
 H x W x D = 150 x 236 x 236 mm  
 ↴ 39/50/60/75



**Cross-arrangement**  
**AOR2H-KRZ**  
 H x W x D = 110 x 221 x 221 mm  
 can be combined with BOX 1



**Box 2**  
**AOR2H-BOX 2**  
 H x W x D = 150 x 236 x 472 mm  
 ↴ 60/75



**Box 3**  
**AOR2H-BOX 3**  
 H x W x D = 150 x 236 x 335 mm  
 ↴ 50/60/75

↔ Carcass width | ↴ Carcass depth  
**Bold** = image shown



Minimalist

# SOLID OAK WOOD Segmented organisers



## SETS FOR DRAWERS AND INTERIOR DRAWERS:



### Set 1

**BEI2H ...-S**

↔ 40/45/50/60/80/90/100/120\*

↖ 60

Behind a side-hung door

**BEI2H ...DR-S**

↔ 45/50/60

↖ 60

\*As of a carcass width of 80 cm, the set contains 2 cutlery inserts

## SETS FOR PULL-OUTS AND INTERIOR PULL-OUTS:



### Set 2

**AOR2H ...-S**

↔ 40/45/50/60/80/90/100/120\*

↖ 60

\*For carcass widths 45/50, the set contains 2x box 1



### Set 3

**AOR2H ...-S1**

↔ 45/60/80/90/100/120\*

↖ 60

\*Depending on the carcass width, the set contains 1 to 3 boxes

## SEGMENT INSERTS FOR DRAWERS AND INTERIOR DRAWERS:



**Segment cutlery insert**  
**BEI2H-KT 60-S**

↔ from carcass width 40 cm  
↖ 60



for carcass depth 50 cm  
**BEI2H-KT 50-S**

↔ from carcass width 40 cm  
↖ 50



for carcass depth 39 cm  
**BEI2H-KT 39-S**

↔ from carcass width 40 cm  
↖ 39



**Extension element**  
for carcass depth 75 cm

**BEI2H ...-TA**  
↔ 60/80/90/100/120



**Multi-functional insert**  
**BEI2H-RAH-S**

↖ 60



**Sliding insert for small items**  
**BEI2H-KLS-S**

↖ 60



**Knife block**  
**BEI2H-MES-S**

↖ 60



**Foil unwinder**  
**BEI2H-FOL-S**

↖ 60



**Spice insert**  
**BEI2H-GEW-S**

↖ 60



**All-purpose tray 1**  
**BEI2H-US 1**

↖ 50/60/75



**All-purpose tray 2**  
**BEI2H-US 2**

↖ 39/50/60/75

## FOR PULL-OUTS AND INTERIOR PULL-OUTS:



**Depth partition**  
**AOR2H-LEI**

↔ 40/45/50/60/80/90/100/120  
↖ 60



**Box 1**  
**AOR2H-BOX 1**

H x W x D = 150 x 236 x 236 mm  
↖ 39/50/60/75



**Cross-arrangement**  
**AOR2H-KRZ**

H x W x D = 110 x 221 x 221 mm  
can be combined with BOX 1



**Box 2**  
**AOR2H-BOX 2**

H x W x D = 150 x 236 x 472 mm  
↖ 60/75



**Box 3**  
**AOR2H-BOX 3**

H x W x D = 150 x 236 x 335 mm  
↖ 50/60/75

↔ Carcass width | ↖ Carcass depth  
**Bold** = image shown



First-class

# SOLID ASH WOOD Segment organisers



For sophisticated tastes: These all-inclusive sets, sets for drawers and pull-outs and individual elements are available in black ash wood.

## FOR THE COMPLETE UNIT:

**All-inclusive set** interior organiser – for base units with 1 drawer and 2 pull-outs



**BEI3H-SET ...**  
↔ 60/80/90/100/120  
↴ 60

## SETS FOR DRAWERS AND INTERIOR DRAWERS:



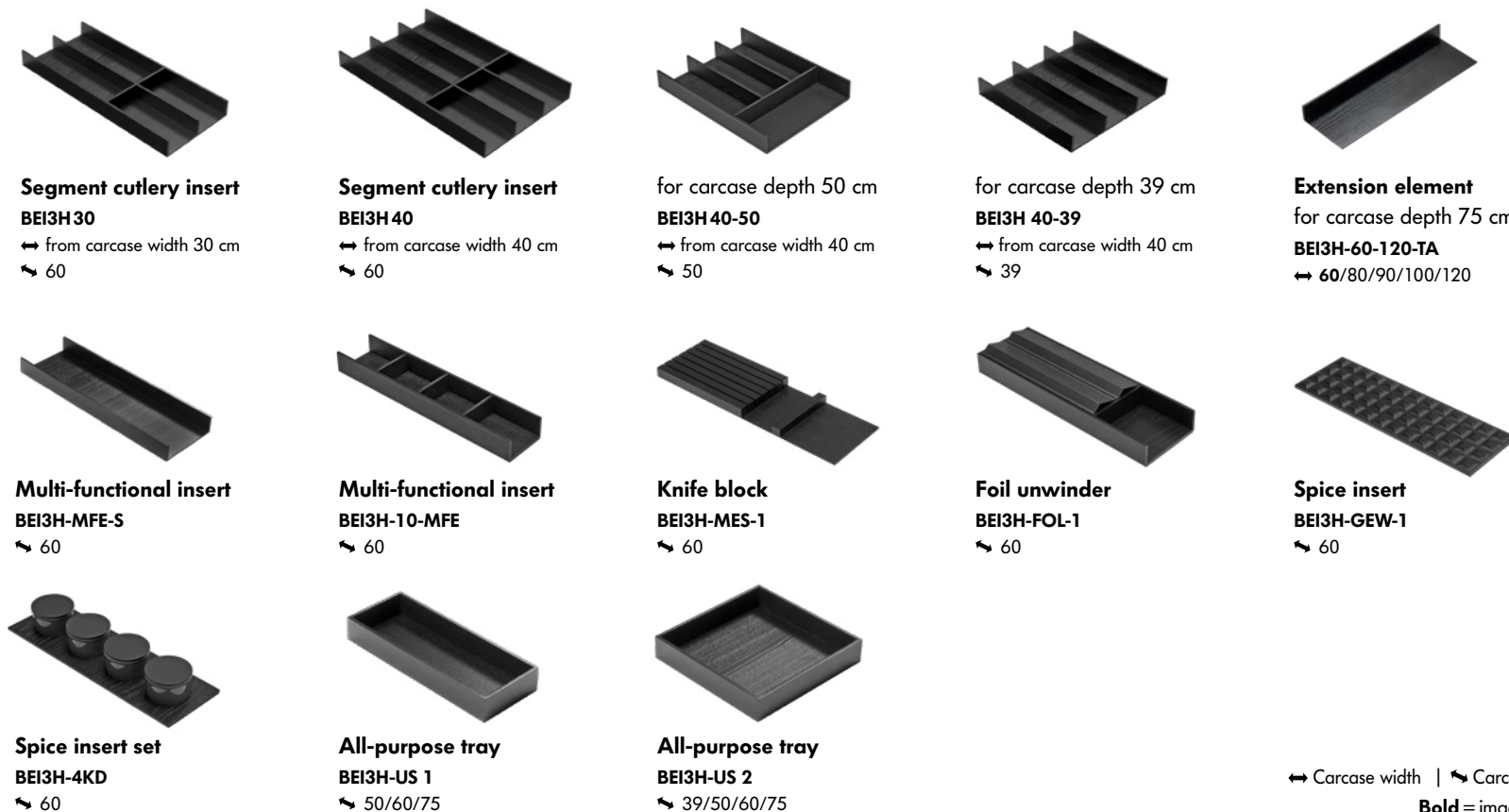
**Set 1**  
**BEI3H ...-S**  
↔ 40/45/50/60/80/90/100/120\*  
↴ 60  
Behind a side-hung door:  
**BEI3H ...DR-S**  
↔ 45/50/60  
↴ 60

\*As of a carcass width of 80 cm, the set contains 4 all-purpose trays

**Set 2**  
**BEI3H ...-S1**  
↔ 40/45/50/60/80/90/100/120\*  
↴ 60

\*As of a carcass width of 80 cm, the set contains 2 multi-functional inserts

## SEGMENT INSERTS FOR DRAWERS AND INTERIOR DRAWERS:

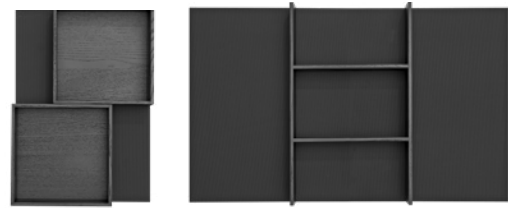


↔ Carcass width | ↴ Carcass depth

**Bold** = image shown 25

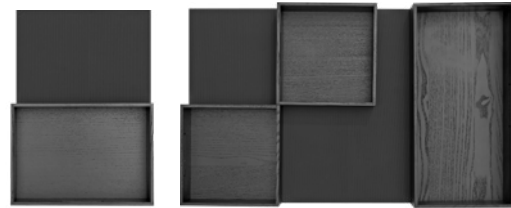


## SETS FOR PULL-OUTS AND INTERIOR PULL-OUTS:



**Set 3**  
**AOR3H ...-S**  
 ↔ 40/45/50/60/80/90/100/120\*  
 ↘ 60

\*For carcass widths 45/50, the set contains 2x box 1



**Set 4**  
**AOR3H ...-S1**  
 ↔ 45/60/80/90/100/120\*  
 ↘ 60

\*Depending on the carcass width, the set contains 1 to 3 boxes

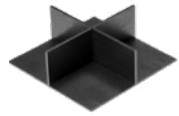
## FOR PULL-OUTS AND INTERIOR PULL-OUTS:



**Depth partition**  
**AOR3H-LEI**  
 ↔ 40/45/50/60/80/90/100/120  
 ↘ 60



**Box 1**  
**AOR3H-BOX 1**  
 H x W x D = 110 x 236 x 236 mm  
 ↘ 39/50/60/75



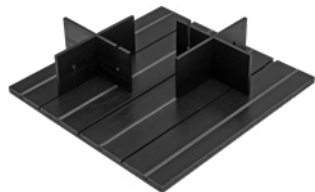
**Cross-arrangement**  
**AOR3H-KRZ**  
 H x W x D = 75 x 220 x 220 mm  
 can be combined with BOX 1



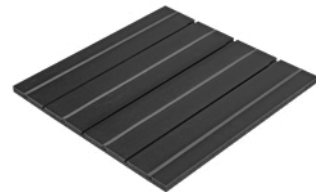
**Box 2**  
**AOR3H-BOX 2**  
 H x W x D = 110 x 236 x 472 mm  
 ↘ 60/75



**Box 3**  
**AOR3H-BOX 3**  
 H x W x D = 110 x 236 x 335 mm  
 ↘ 50/60/75



**Function base with cross slots and slot-in cross dividers**  
**AOR3H ...-FB1**  
 ↔ 60/80/90/100/120  
 ↘ 60



**Function base with cross slots**  
**AOR3H ...-FB**  
 ↔ 60/80/90/100/120  
 ↘ 60



**SET - 2 slot-in cross dividers**  
 suitable for the function base  
**AOR3H-2KREUZ**

↔ Carcass width | ↘ Carcass depth  
**Bold** = image shown



### KEEP THINGS TOGETHER THAT BELONG TOGETHER

For instance, keep baking utensils together in one box. Or put breakfast items together. This way, everything is quickly put on the table and cleared away again.





nolte**neo.**

# INTERIOR ORGANISERS

*for your*

**nolte**neo** KITCHEN**





neo basic

# PLASTIC black



## FOR DRAWERS AND INTERIOR DRAWERS:



**Cutlery insert**  
**BE1K ...-N**  
↔ 30/40/45/50/60/80/90/100/120  
↴ 60



for carcass depth 75 cm  
**BE1K ...-N-75**  
↔ 60/80/90/100/120  
↴ 75



for hob base units:  
**BE1K ...-NH2**  
↔ 60/80/90/100/120  
↴ 60



**Segment cutlery insert:**  
**BE1K-KT-50**  
↔ from carcass width 45 cm  
↴ 50

## Individual elements – Inserts in solid oak wood



Cutting board  
**BE1K-SB**



Knife block  
**BE1K-MES**



Foil unwinder  
**BE1K-FOL**

## FOR PULL-OUTS AND INTERIOR PULL-OUTS:



**Storage set with partition elements**  
**AOR1K45-3T**  
↔ from carcass width 45 cm  
↴ 60



**Storage set with storage jars**  
**AOR1K45-3VG**  
↔ from carcass width 45 cm  
↴ 60



neo first-class

# SOLID ASH WOOD Segment organisers



notte neo.

## SETS FOR DRAWERS AND INTERIOR DRAWERS:



### Set 1

**BEI3H ...-NS**

↔ 45/50/60/80/90/100/120\*  
↷ 60



### Set 2

**BEI3H ...-NS1**

↔ 45/50/60/80/90/100/120\*  
↷ 60

\*As of a carcass width of 80 cm, the set contains additional items

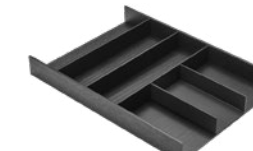
## SEGMENT INSERTS FOR DRAWERS AND INTERIOR DRAWERS:



### Segment cutlery insert

**BEI3HN 30**

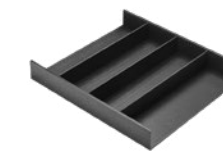
↔ from carcass width 30 cm  
↷ 60



### Segment cutlery insert

**BEI3HN 40**

↔ from carcass width 40 cm  
↷ 60



### for carcass depth 50 cm

**BEI3HN 40-50**

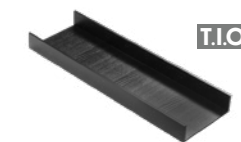
↔ from carcass width 40 cm  
↷ 50



### for carcass depth 39 cm

**BEI3HN 40-39**

↔ from carcass width 40 cm  
↷ 39



### Multi-functional insert

**BEI3H-MFE-S**

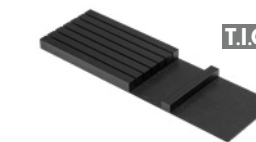
↷ 60



### Multi-functional insert

**BEI3H-10-MFE**

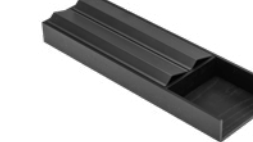
↷ 60



### Knife block

**BEI3H-MES-1**

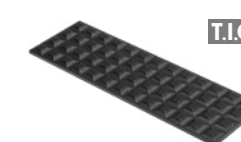
↷ 60



### Foil unwinder

**BEI3H-FOL-1**

↷ 60



### Spice insert

**BEI3H-GEW-1**

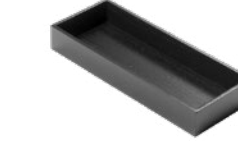
↷ 60



### Spice insert set

**BEI3H-4KD**

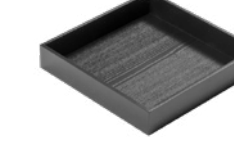
↷ 60



### All-purpose tray

**BEI3H-US 1**

↷ 60



### All-purpose tray

**BEI3H-US 2**

↷ 39/50/60/75

↔ Carcass width | ↷ Carcass depth

**Bold** = image shown



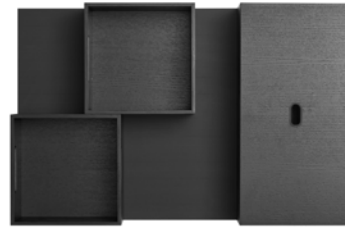


SETS FOR PULL-OUTS AND INTERIOR PULL-OUTS:



\*At a carcass width of 120 cm, the set contains 2x multi-functional inserts

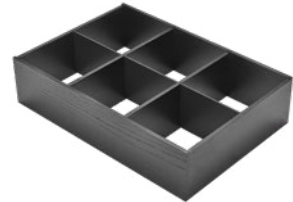
**Set 3**  
AOR3H ...-NS  
↔ 40/45/50/60/80/90/100/120\*  
↵ 60



\*Depending on the carcass width, the set contains different items

**Set 4**  
AOR3H ...-NS1  
↔ 45/60/80/90/100/120\*  
↵ 60

FOR PULL-OUTS AND INTERIOR PULL-OUTS:



**Multi-functional insert**  
AOR3HN40-MFE  
↔ 40/45/50/60/80/90/100/120  
↵ 60

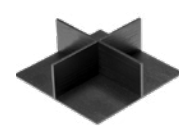


**Storage container set**  
AOR3H-3KD  
↔ 40/45/50/60/80/90/100/120  
↵ 60



T.I.O.

**Box 1**  
AOR3H-BOX 1  
H x W x D = 110 x 236 x 236 mm  
↵ 39/50/60/75



**Cross-arrangement**  
AOR3H-KRZ  
H x W x D = 75 x 220 x 220 mm  
can be combined with BOX 1



T.I.O.

**Box 2**  
AOR3H-BOX 2  
H x W x D = 110 x 236 x 472 mm  
↵ 60/75



T.I.O.

**Box 3**  
AOR3H-BOX 3  
H x W x D = 110 x 236 x 335 mm  
↵ 50/60/75



T.I.O.

**Box 4**  
AOR3HN-BOX 4  
H x W x D = 110 x 327 x 157 mm  
↵ 39/50/60/75



**Lid for box 1 / 2**  
AOR3HN-DB1 / -DB2  
matches box 1 or box 2





neo design lovers

# T.I.O. (Take It Out) Full organisers

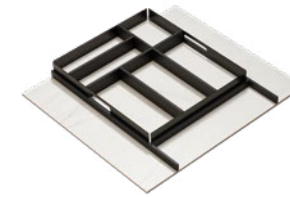


notte neo

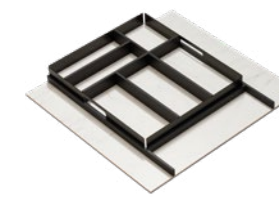
Watch this short video to see the advantages of T.I.O. cutlery inserts



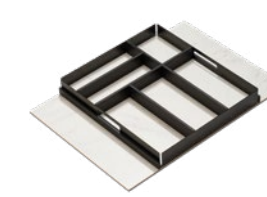
## FOR DRAWERS AND INTERIOR DRAWERS:



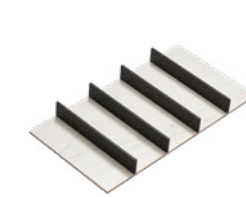
**T.I.O. cutlery insert**  
**BEI3HT ...**  
↔ 30/40/45/50/60/80/90/100/120\*  
↙ 60



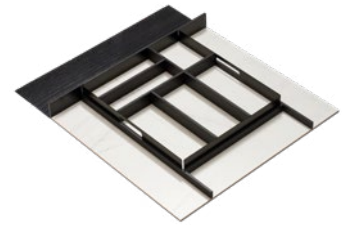
behind a side-hung door  
**BEI3HT 60-DR**  
↔ 60\*  
↙ 60



for carcass depth 50 cm  
**BEI3HT 60-50**  
↔ 60\*  
↙ 50

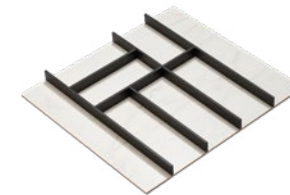


for carcass depth 39 cm  
**BEI3HT 60-39**  
↔ 60  
↙ 39



for carcass depth 75 cm  
**BEI3HT ...-75**  
↔ 60/80/90/100/120\*  
↙ 75

\*With a removable tray element as of a carcass width of 60 cm



for hob base units  
**BEI3HT ...-H2**  
↔ 60/80/90/100/120  
↙ 60



**Segment cutlery insert**  
**BEI3HT 40-50-S**  
↔ from carcass width 40 cm  
↙ 50



for carcass depth 39 cm  
**BEI3HT 40-39-S**  
↔ from carcass width 40 cm  
↙ 39



**Extension element**  
for carcass depth 75 cm  
**BEI3H-60-120-TA**  
↔ from carcass width 30 cm

## SEGMENT INSERTS FOR DRAWERS AND INTERIOR DRAWERS:



**Multi-functional insert**  
**BEI3HT-MFE**  
↙ 60



**Multi-functional insert**  
**BEI3HT-10-MFE**  
↙ 60



**Knife block**  
**BEI3HT-10-MES**  
↙ 60

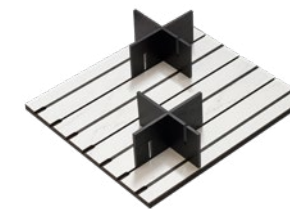


**Foil unwinder**  
**BEI3HT-FOL**  
↙ 60



**Spice insert set**  
**BEI3HT-10-4KD**  
↙ 60

## FOR PULL-OUTS AND INTERIOR PULL-OUTS:



**T.I.O. SET function base with cross slots and 2 slot-in cross dividers**  
**AOR3HT ...-FB1**  
↔ 60/80/90/100/120  
↙ 60



**T.I.O. function base with cross slots**  
**AOR3HT ...-FB**  
↔ 60/80/90/100/120  
↙ 60



**SET - 2 slot-in cross dividers** suitable for the function base  
**AOR3H-2KREUZ**



The individual elements in black ash wood marked with **T.I.O.** can optionally be used in the T.I.O. system.

↔ Carcass width | ↙ Carcass depth  
**Bold** = image shown





For more information about kitchens, utility rooms or living room furniture, check out our brochures in the **DOWNLOAD AREA**

*Sustainability as a guiding principle defines our entire company and its value chain and is reflected in our daily actions and mindset. It is firmly embedded in our comprehensive company strategy, with which we aim to achieve lasting improvements for people and the environment.*

## OUR COMMITMENT TO ...



### OUR COMPANY

With the aim of good corporate governance and to uphold the values associated with this, we have established resilient structures, processes and partnerships throughout the years. High quality, modern aesthetics, sustainability and appealing value for money are factors that we always account for in our product range. For instance, over 99 % of the wood we use was grown in accordance with the principles of sustainable forestry.



### PEOPLE

Our employees are one of our top priorities. Their commitment, knowledge, experience and curiosity are what makes Nolte Küchen what it is today. That is why we support our employees in their personal development, both professionally by offering initial and continued training opportunities, and in the private sphere by respecting and promoting a healthy work-life balance.



### THE ENVIRONMENT

As a company we have made it our goal to use natural resources responsibly and sustainably. Thanks to our effective climate and environmental management, we have already achieved climate-neutral production at our locations in Löhne and Melle. The main energy sources used by Nolte Küchen are certified green power and our boilers that use wood waste from our own production.



### SOCIETY

Since its early days, Nolte Küchen has had a close relationship with its home region and we actively promote its health and growth. Social commitment is a tradition at our company and has been a core value since our beginnings. We help people and regions in crisis situations, for instance education institutes, associations and foundations for child welfare. Our motto is: We give support where support is needed!

” The way we act today shapes the world we leave future generations. Sustainability is our commitment to a better future. “

Since the summer of 2023, the Nolte Küchen site is home to native bees, which have already produced their first honey yields in their hives. But these bees don't just give us delicious honey, they are also essential pollinators that contribute significantly to maintaining the diversity of plant life.

Discover the **NOLTE SUSTAINABILITY REPORT**





The kitchen is the room of rooms.  
We probably *live* more,  
and more *intensively*,  
here than anywhere else in the home.  
It is the place where  
we meet, where we encounter others.  
As family or friends.  
As a couple.  
We *cook, eat* and *enjoy* ourselves  
in the kitchen. And sometimes we have  
all the time in the world as we do so.  
We argue. And *make up again*.  
We read, write, send emails, post messages.  
And maybe philosophise a little.  
And – quite secretly – the kitchen sets  
the rhythm of our day.  
Good morning. Then midday. Then evening.  
And sometimes night ...  
Which is *why we love* the kitchen.

Living in the kitchen. nolte

**nolte**<sup>®</sup>  
KÜCHEN

Nolte Küchen GmbH & Co. KG | Anni-Nolte-Straße 4 | 32584 Löhne, Germany | [www.nolte-kuechen.com](http://www.nolte-kuechen.com)

VF-ORGA-GB

Subject to technical changes. For photographic and printing reasons, the colours in this catalogue may occasionally differ slightly from the original colours.

