

*Perfectly coordinated
living area*

*Intelligently planned
utility room*



Nolte **LIVING**

nolte[®]
KÜCHEN

More for your home.

Recent years have seen a noticeable change in the home environment: away from separate areas towards open-plan design with fluid transitions. The harmonious overall appearance of the apartment is decisive in whether someone feels at home. Therefore, it is important to bring all living areas into harmony with each other. From the personal retreat to the open plan kitchen with a transition to the dining area, to wardrobe solutions in the hallway: With Nolte, you have all the possibilities to turn your home into a perfectly furnished oasis of well-being. Because with our product range, storage space, functionality, budget, and design can be optimally combined.

Our high-quality reproductions in modern concrete, stone, and wood looks also enable sophisticated design on a small budget. Real materials such as wood, metal, varnish, glass, cement, or stone meet the highest standards. Favorite decors that run from the kitchen through the hallway to the living area set stylish accents.

On the following pages, you will find many suggestions beyond your kitchen!



SOFT LACK White soft mat

Living, dining, working **one room, many possibilities.**

Nolte LIVING, with its wide selection of furniture, materials, decors and lighting options, enables a harmonious cosiness beyond the kitchen: In this planning example, we opt for a living wall with open shelves, equipped with subtly integrated lighting. This can be variably adjusted in brightness and light temperature, from cool to warm, from bright to soft – depending on the desired atmosphere and time of day. Thus, an inviting and cozy living and dining area is created, inviting you to linger.

MORE LIGHT FOR MORE ATMOSPHERE

Our lighting concept offers a wide range of options to give your rooms additional cosiness and comfort.

From integrated milled built-in lights in wall shelf units, side panels, and wall shelves to sophisticated LED lighting in the bottom-panel recess – there are no limits to your creativity.



SOFT LACK White soft mat

Open relationship – kitchen and living space.

The living area creates a perfect harmony of elegance and comfort that blends seamlessly into the kitchen design, thus becoming the focal point of the house. Here, cooking, enjoying, and relaxing merge into a harmonious whole.

The elegant, simple sideboard in white soft mat perfectly complements the warm wood tone of TAVOLA Oak pinot kitchen furniture. This makes the room appear open and inviting, skillfully reflecting the charm of the urban period apartment.



SOLID DESIGN

Our furniture plinth feet set design accents and give each piece of furniture a special note. Depending on the choice, they create a floating lightness or a striking stance. Whether slender aesthetics or robust appearance, our plinth feet are available in various styles and finishes.



SOFT LACK White soft mat

Chic in the Closet thanks to order

The design of the living area is also continued in the hallway: A cleverly planned wardrobe in white soft mat with accents in Oak pinot decor. Our versatile wardrobe solutions offer you the utmost in organization and comfort. Functional wardrobes and practical shoe cabinets make organising your hallway a breeze. For a stylish and orderly start to the day.



FLEXIBLE DESIGN OPTIONS

You have the choice of either wardrobe hooks or rails. Depending on the need, the wardrobe rails can be mounted either above the closet shelf or laterally between two pieces of furniture.

**CLICK
HERE**



CURIOUS TO SEE MORE?
Discover the complete interior of the charming period apartment in our video. Watch now and get inspired!

In the hidden compartment behind the drop-down door, scarves, gloves, and hats can be stowed away in an instant and are just as quickly accessible.

The open shelf space offers the perfect place for your everyday shoes – practical and clearly arranged.



MANHATTAN Oak graphite silver

Home becomes office.



PLUS Graphite soft mat

... *or* mobile working.

The requirements for a functional and stylish home office have changed significantly. Living and working spaces are increasingly merging, and choosing the right furniture is more important than ever. Nolte offers flexible solutions: A permanently integrated workstation, for example, on a wall-mounted sideboard or a cabinet that can be opened and closed as needed.

The „Mobile Working“ unit by Nolte is the ideal choice to make work utensils disappear after use, thus creating a seamless transition from work to relaxation. When closed, it ensures a harmonious and tidy atmosphere in the room.



PLUS Lava soft mat

Ideas for all **living spaces.**

In urban areas and conurbations, available living space is becoming increasingly scarce. As a result, the boundaries between individual living areas are blurring: Living, sleeping, cooking, working and relaxing are increasingly taking place in the same room.

The trend towards micro-living is gaining ground in more and more cities. With our product range, you can design your home exactly according to your ideas and needs. Of course, you don't have to sacrifice anything in the process:

A kitchen with neat storage space and intelligent interior organisation. A matching sideboard with open shelves and integrated lighting. Wall shelves in a modern industrial design and a smartly designed wardrobe complete the picture – and the best part: All pieces of furniture are harmoniously coordinated in the same style and design.





PLUS Lava soft mat

Perfectly coordinated.

Less can also be more. People starting their careers in a big city or living as a single person often choose a micro-apartment, as this is generally cheaper than a multi-room flat. But even within 24 square meters, it's possible to create a cozy home. The key is a well-thought-out interior that provides a comfortable atmosphere despite limited space. This makes the coordinated design of the spaces all the more important – with Nolte LIVING, it's a breeze!

Cozily furnished: Illuminated wall shelf units create a homely atmosphere through indirect light.



Coordinated with each other: The decor of the kitchen is reflected in the entire apartment.



**SMALL PLACES.
BIG IDEAS.**
Ready for big ideas in a small space? Discover solutions that combine style and functionality!

MANHATTAN Oak nero

Space for ideas and more.

Living room, library or both? Meeting every preference and expectation, Nolte LIVING lets you design your home in exactly the way you want. Needless to say, you've no need to compromise on anything in your kitchen that demonstrates tasteful style: be it open shelves lit from the side or a sideboard with illuminated recessed finger pull profile. Modern LED technology produces a gentle light that can also be matched to the particular mood or time of day all very easily by remote control or mobile phone app.



MANHATTAN UNI Henna red





LEGNO Oak champagne

Furniture *as individual* **as your home.**

From glass display units in on-trend black to a solution for the television and an individual-style room divider around your sofa-scape: Nolte LIVING gives you all the options for designing your entire home from one and the same mould.



Tailored to your needs and situation,
furniture for all parts of the home.

Exuding warmth and homeliness, the
surface in LEGNO oak champagne
creates an exciting contrast to the SOFT
LACK platinum grey soft mat fronts.

SOFT LACK Platinum grey soft mat



NOVA LACK High-gloss graphite

Cuts a great figure
in the hallway too.



You have
the choice.

At Nolte LIVING, you can naturally access the same range of high-quality and budget-friendly materials and decors that you use in your kitchen: From different colour variations in high gloss or mat, to wood, concrete and stone decors, to real materials – creating your personal favourite piece of furniture.



TAVOLA Oak pinot

PLUS Black soft mat



STONE White concrete

SOFT LACK Olive soft mat



SOFT LACK Black Green soft mat

Anything but monotonous.

The versatility of our mat lacquer concept sets colorful accents not just in the kitchen, but in every living area. Choose from a wide selection of color variations – from light and dark shades to trendy or classic tones. Whether you opt for earthy, natural colours or a striking eye-catcher: Design your home to suit your personal taste. With Nolte's colour options, you bring harmonious elegance into the kitchen and living room, perfectly coordinated in material and finish.



The „Mobile Working“ wall unit quickly conceals work – for a consistently tidy home.

Mat lacquer variety for your personal accents. Colour offers many possibilities for individualisation: warm nuances enliven, cool shades calm. Harmonious or rich in contrast – design according to your taste.

Anything goes!



Modern wall shelf units

with black-tinted glass exude a sense of homeliness. We offer a variety of display cabinets, wall shelves and shelves with sliding doors to enhance any ambience.



Integrated lighting

as an indirect light source provides more cosiness and comfort.



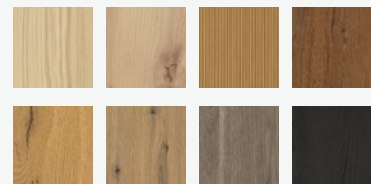
Solid colours in high-gloss or soft mat

Our mat lacquer concept currently comprises 20 genuine lacquer colours in cold and warm tones. We also offer an extensive selection of high-gloss lacquers as well as more cost-effective lacquer laminate options with matt and glossy surfaces.



Stone, concrete or wood

In addition to plain, stone and concrete looks, we offer a selection of over 20 different wood decors - from light to black, from reproduction to real material.



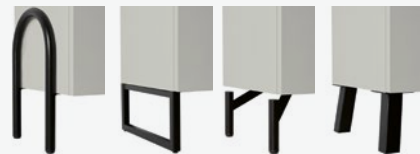
Handleless, knob, handle or bar handle

Whether it's simple with Push To Open fittings, straightforward with a handle trim or a choice of over 70 handle variations - everything is available to suit your taste.



With or without furniture plinth feet

For a particularly design-oriented appearance, furniture plinth feet can be fitted to wall-mounted cabinets.



PLUS White soft mat



Plan to your heart's content.

You can always choose from the entire Nolte Küchen product range to plan individually tailored solutions for the living area. The line-up is being extended to include special-purpose furniture which, for example, can also be wall-mounted.

You will find a list of all wall-mounted units on the next few pages. All floor-standing cabinet solutions are shown in the "My Kitchen" brochure or online at www.nolte-kuechen.com



FLOOR-STANDING

Our line-up either lets you design floor-standing solutions ...

WALL-MOUNTED

... or, by way of alternative, ones off the floor too. The choice is yours!



This is where you can find a number of planning examples illustrating some of the options you have. These are representative of an almost infinite number of possible combinations and configuration options.



Wall-mounted cabinetry with a lowboard featuring pull-out units and high wall units, Dimension approx. 242 cm.



Wall-mounted cabinetry of a MatrixArt lowboard with pull-out units, Dimension approx. 250 cm.



Wall-mounted cabinetry featuring a sideboard and an LED wall shelf, Dimension approx. 240 cm.



Floor-standing design featuring a sideboard and display wall units, Dimension approx. 300 cm.



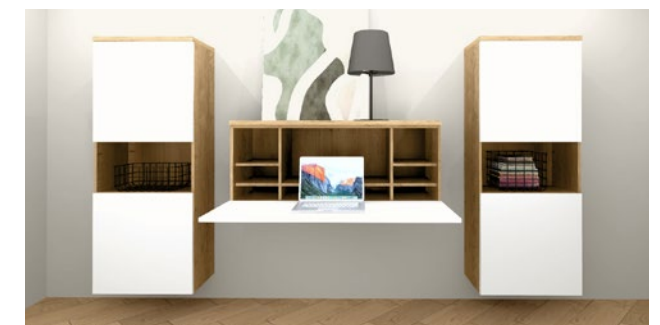
Wall-mounted cabinetry of a highboard with an open shelf unit, Dimension 160 cm.



Wall-mounted cabinetry featuring two highboards with open compartments, Dimension approx. 150 cm.



Wall-mounted cabinetry with the „mobile working“ wall unit and a bar flap unit, Dimension approx. 120 cm.



Wall-mounted cabinetry with the „mobile working“ wall unit and two highboards, Dimensions approx. 290 cm.

Purist lowboards

Make the most of the vast range of available options when planning with Nolte LIVING: besides the entire Nolte Küchen product range, you can choose from the following base units.



HEIGHT 300 mm:



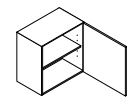
PULL-OUT UNIT
wall-mounted or floor standing | 1 pullout
UAK
↔ 30/40/45/50/60/80/90/100/120
↘ 50/39



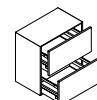
OPEN SHELF
wall-mounted
HR
↔ 30/40/45/50/60/80/90/100/120
↘ 50/39

floor standing
UR
↔ 30/40/45/50/60
↘ 50/39

HEIGHT 600 mm:



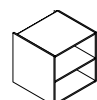
BASE UNIT
wall-mounted or floor standing | 1 door, 1 loose shelf
UDD
↔ 30/40/45/50/60
↘ 50/39



PULL-OUT UNIT
wall-mounted or floor standing | 2 pullouts
UAZ
↔ 30/40/45/50/60/80/90/100/120
↘ 50/39



PULL-OUT UNIT
wall-mounted | 1 open compartment, 1 pullout
UAO
↔ 30/40/45/50/60
↘ 50/39



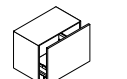
OPEN SHELF
wall-mounted | 1 loose shelf
HR
↔ 30/40/45/50/60
↘ 50/39

floor standing | 1 loose shelf
UR
↔ 30/40/45/50/60
↘ 50/39

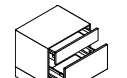
HEIGHT 450 mm:



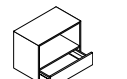
BASE UNIT
wall-mounted or floor standing | 1 door, 1 loose shelf
UDD
↔ 30/40/45/50/60
↘ 50/39



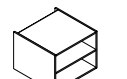
PULL-OUT UNIT
wall-mounted or floor standing | 1 pullout
UAK
↔ 30/40/45/50/60/80/90/100/120
↘ 50/39



PULL-OUT UNIT
wall-mounted or floor standing | 1 drawer, 1 pullout
UAT
↔ 30/40/45/50/60/80/90/100/120
↘ 50/39



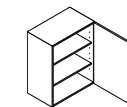
BASE UNIT
wall-mounted | 1 open compartment, 1 drawer
USO
↔ 30/40/45/50/60
↘ 50/39



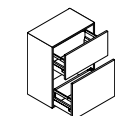
OPEN SHELF
wall-mounted | 1 loose shelf
HR
↔ 30/40/45/50/60/80/90/100/120
↘ 50/39

floor standing | 1 loose shelf
UR
↔ 30/40/45/50/60
↘ 50/39

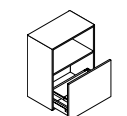
HEIGHT 750 mm:



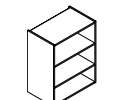
BASE UNIT
wall-mounted or floor standing | 2 loose shelves
UDD
↔ 30/40/45/50/60
↘ 50*/39



PULL-OUT UNIT
wall-mounted or floor standing | 2 pullouts
UZ
↔ 30/40/45/50/60
↘ 50*/39



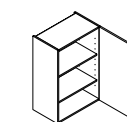
PULL-OUT UNIT
wall-mounted | 1 open compartment, 1 pullout
UAO
↔ 30/40/45/50/60
↘ 39



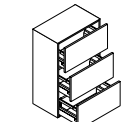
OPEN SHELF
wall-mounted | 2 loose shelves
HR
↔ 30/40/45/50/60
↘ 50/39

floor standing | 2 loose shelves
UR
↔ 30/40/45/50/60
↘ 50/39

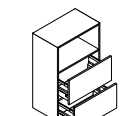
HEIGHT 900 mm:



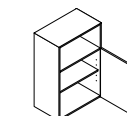
BASE UNIT
wall-mounted or floor standing | 1 door, 2 loose shelves
UDD
↔ 30/40/45/50/60
↘ 50*/39



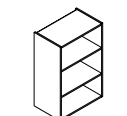
PULL-OUT UNIT
wall-mounted or floor standing | 3 pullouts
UAZ
↔ 30/40/45/50/60
↘ 50*/39



PULL-OUT UNIT
wall-mounted | 1 open compartment, 2 pullouts
UAZO
↔ 30/40/45/50/60
↘ 39



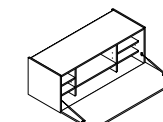
BASE UNIT
wall-mounted | 1 open compartment, 1 door, 1 loose shelf
UTO
↔ 30/40/45/50/60
↘ 39



OPEN SHELF
wall-mounted | 2 loose shelves
HR
↔ 30/40/45/50/60
↘ 50/39

floor standing | 2 loose shelves
UR
↔ 30/40/45/50/60
↘ 50/39

SUPPLEMENTARY UNIT „MOBILE WORKING“



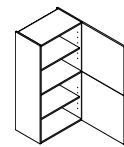
WALL UNIT MOBILE WORKING
wall-mounted | 1 shelf flap, 2 centre panels, 5 loose shelves
HMA
↔ 120 ↓ 45 ↘ 50

* available only in a floor-standing version

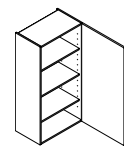
↔ Width | ↓ High | ↘ Depth

Elegant highboards

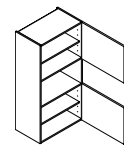
HEIGHT 1200 mm:



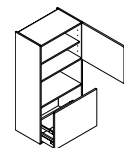
TALL UNIT
wall-mounted | 2 doors, 1 fixed shelf, 2 loose shelves
VT
↔ 30/40/45/50/60
↵ 39



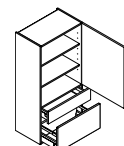
TALL UNIT
wall-mounted | 1 full height door, 3 loose shelves
VDD
↔ 30/40/45/50/60
↵ 39



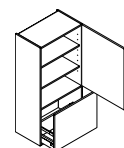
TALL UNIT
wall-mounted | 2 doors, 2 loose shelves, 1 open compartment
VTO
↔ 30/40/45/50/60
↵ 39



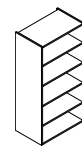
TALL UNIT
wall-mounted | 1 door, 1 loose shelf, 1 open compartment, 1 pullout
VAZO
↔ 30/40/45/50/60
↵ 39



TALL UNIT
wall-mounted | 1 door, 2 loose shelves, 2 drawers, 1 pullout
VAT
↔ 30/40/45/50/60
↵ 39

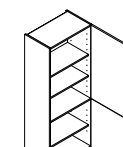


TALL UNIT
wall-mounted | 1 door, 2 loose shelves, 1 pullout
VDD
↔ 30/40/45/50/60
↵ 39

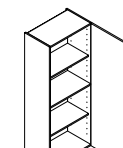


OPEN SHELF
wall-mounted | 4 loose shelves
HR
↔ 30/40/45/50/60
↵ 39

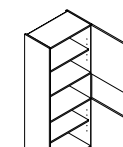
HEIGHT 1500 mm:



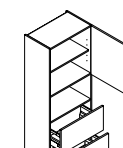
TALL UNIT
wall-mounted | 2 doors, 1 fixed shelf, 3 loose shelves
VT
↔ 30/40/45/50/60
↵ 39



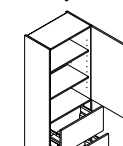
TALL UNIT
wall-mounted | 1 full height door, 1 fixed shelf, 2 loose shelves
VDD
↔ 30/40/45/50/60
↵ 39



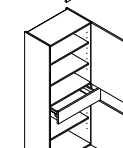
TALL UNIT
wall-mounted | 2 doors, 2 loose shelves, 1 open compartment
VTO
↔ 30/40/45/50/60
↵ 39



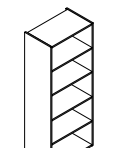
TALL UNIT
wall-mounted | 1 door, 1 loose shelf, 1 open compartment, 2 pullouts
VAZO
↔ 30/40/45/50/60
↵ 39



TALL UNIT
wall-mounted | 1 door, 2 loose shelves, 2 pullouts
VAZ
↔ 30/40/45/50/60
↵ 39



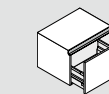
TALL UNIT
wall-mounted | 2 doors, 3 loose shelves, 1 drawer
VU
↔ 30/40/45/50/60
↵ 39



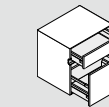
OPEN SHELF
wall-mounted | 4 loose shelves
HR
↔ 30/40/45/50/60
↵ 39

Handleless – MatrixArt

LOWBOARDS 420 / 570 mm

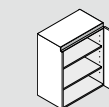


PULL-OUT UNIT
wall-mounted or floor standing | 1 pullout
YUAK
↔ 30/40/45/50/60/80/90/100/120
↓ 42
↵ 50/39

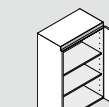


PULL-OUT UNIT
wall-mounted or floor standing | 1 drawer, 1 pullout
YUAT
↔ 30/40/45/50/60/80/90/100/120
↓ 57
↵ 50/39

SIDEBOARDS 750 / 900 mm

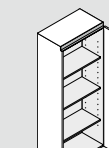


BASE UNIT
wall-mounted or floor standing | 1 door, 2 loose shelves
YUDD
↔ 30/40/45/50/60
↓ 75
↵ 50*/39



BASE UNIT
wall-mounted or floor standing | 1 door, 2 loose shelves
YUDD
↔ 30/40/45/50/60
↓ 90
↵ 50*/39

HIGHBOARDS 1500 mm



TALL UNIT
wall-mounted | 1 door, 3 loose shelves
YV
↔ 30/40/45/50/60
↓ 150
↵ 39

* available only in a floor-standing version

↔ Width | ↓ High | ↵ Depth



The Nolte LIVING Highboards not only cut a great figure in the living room. They can also be used anywhere you choose in the dining area or kitchen.



Information on all other living-space and kitchen options is provided in the „My Kitchen“ brochure or online at www.nolte-kuechen.com



Everything stored
next to the kitchen.

YOUR INTELLIGENTLY PLANNED AND
LOGICALLY FURNISHED UTILITY ROOM

Everything in perfect order.

The utility room used to be an integral part of every household. Then it tended to go out of fashion, mainly for reasons of space – after all, living space has become increasingly expensive. But this is precisely why it is being rediscovered – and completely redefined: a utility room not only perfectly complements modern, design-focused kitchens, it gives the entire household a clearer and more practically organised structure.

Whether as a dressing room, laundry room or pantry – you decide how your utility room should look.



SIMPLY MORE SPACE FOR PROVISIONS, LAUNDRY, CLOTHING ...

Efficiently concentrated, it provides a place for everything that is important and necessary for everyday housekeeping. From washing machine, tumble dryer, ironing board, provisions, cleaning products and equipment to coat rack, beverage crates and recycling system. This way, a utility room eases strain on the rest of available living space. And creates space for what's important: living in a relaxed home environment and enjoying life.

MANHATTAN UNI Olive



HOMESTORY
BY TINA RUTHE
Watch now





PERFECTLY PLANNED FOR ALL THE THINGS YOU NEED EVERY DAY:

- 1 WASHING MACHINE & TUMBLE DRYER
- 2 LAUNDRY
- 3 BOTTLES AND CRATES
- 4 HOUSEHOLD EQUIPMENT
- 5 CLOTHING
- 6 SORTING WASTE
- 7 PROVISIONS AND STORAGE

WELL-ORGANISED FOR A GOOD LIFE

When planning and furnishing your utility room, there are two main questions to address: What do I need – and where do I need it? The answers are then quickly found using our versatile solutions. Functionality, ergonomics and storage capacity are intelligently combined in a way that makes all areas a well-balanced unit. Because this simply makes everything so much easier – whether doing the washing, ironing, putting away the shopping, getting changed after work, collecting deposit bottles and waste glass or whatever else you need to get done in your household. This is where the possibilities are as individual and flexible as your wishes. The many different options are described in detail on the next few pages.

Everything has its place –
even in the smallest of spaces.

Everything in view.



SORTING WASHING CORRECTLY

Don't sort worn clothes in just one laundry basket but use several baskets for pre-sorting – e.g. into light, coloured, sensitive and 60° or 95° washing.



KEEPING BEVERAGES IN EASY REACH

The larger unit for beverages keeps everything in immediate reach because the various crates are clearly set out and open. This way, you can take out bottles and put empties back without having to juggle around with crates.



CLEAN, NEAT AND TIDY

Various holders in the broom cupboard ensure that everything is kept in the right place – letting you put your hand on whichever household appliance you happen to need. And also everything else you need for cleaning, sweeping, ironing or vacuuming.



WASHING MACHINE TUMBLE DRYER IN EASY REACH

Everything completely relaxed. These appliances too in the utility room are positioned at an ergonomic height. A number of practical solutions are also available, such as the drawer for the laundry basket which eliminates the bother of having to bend down and helps to take some of the effort out of housekeeping.



SORTING AND PLANNING THE WASHING MORE EASILY

The laundry sorting unit with its drawers sorts laundry into coloured, white and 95°-wash items almost automatically – even when closed thanks to the practical openings in the front.



GENEROUSLY SIZED HANGING CUBICLE

Can take a lot: a coat rack integrated in the utility room, for example, lends itself to storing work clothes. A neat solution. Particularly when cloths are dirty. There's also plenty of space here for your summer or winter clothing when it's not needed.



MULTI-SORTED

The practical pull-out systems come with ample space for cleanly and accurately sorting waste – providing the ideal basis for successful recycling and sustainable housekeeping.

Everything nice and fresh after it's washed and dried.

INTEGRATING WASHING MACHINES AND TUMBLE DRYERS

The appliance housing base units lift your appliances to the optimum ergonomic work height.

LAUNDRY SORTING UNIT:

Simply stand it exactly where laundry is washed and dried. 3 pull-outs complete with laundry sorting baskets.

VWS

↔ 60
↓ 195/210/225
↖ 60

Also available without baskets.



WALL UNIT:

Utilise the space above the machine for storing detergents, stain remover etc.

H
60 ↔
30/45/60/75/90 ↓
60 ↖

APPLIANCE HOUSING BASE UNIT:

For washing machine or dryer.
1 pullout with laundry sorting basket.

GGWA 60-46-A

↔ 60
↓ 45
↖ 60

Also available without basket.



APPLIANCE HOUSING BASE UNIT:

For washing machine or dryer.
1 drawer, 1 pullout.

GGWA 60-46-SA

60 ↔
45 ↓
60 ↖



GETTING MOULD STAINS OUT

Putting garments and other textiles away in a poorly ventilated place while they are still damp can result in mould stains. To remove them, simply soak the affected areas in buttermilk and then machine-wash in the normal way.



THIS IS WHERE YOU SAVE SPACE AND TIME EVERY DAY

Our sorting solutions make it easy for you to minimize the time taken to do your washing – with maximum effect. Because everything is arranged and designed to let you reach your target as quickly with a little work as possible: clean laundry.

Everything neatly in its place.



CLEAR STRUCTURE IN STORING BOTTLES AND CRATES

3. BEVERAGE CRATE UNIT:
Clearly organised storage and easy access to all beverages.

VGL
↔ 60
↓ 195/210/225
↖ 60

4. PULLOUT UNIT WITH BOTTLE BASKET:

UAID
↑ 30
↓ 75
↖ 60

PRACTICAL WASTE SORTING

5. SINK BASE UNIT:
Systematically separate waste and recyclables.

SABD
↔ 45/50/60
↓ 75
↖ 60

6. PULLOUT UNIT:
With container for recyclable-waste bag.

UWSD
↑ 30
↓ 75
↖ 60



PROVISIONS, CLEANING PRODUCTS AND DOMESTIC APPLIANCES

1. TAMBOURDOOR UNIT:
Provisions of every kind always in easy reach.

HAI
↔ 50/60/80/90
↓ 115/130/145
↖ 35/45

2. BROOM CUPBOARD:
Storing ironing board, vacuum cleaner and step ladder safely and saving space at the same time.

VB
↔ 30/40/45/50/60
↓ 195/210/225
↖ 45/60

HBT
Mount for ironing board or step ladder.



TIP ON SORTING WASTE:

Yogurt pots don't need to be rinsed out before disposing of them in recyclable waste. The water used adversely affects the ecological balance, and plastics are cleaned anyway before they are recycled.



Everything ready to put on.

ATTRACTIVE, ORGANIZED, AND TIDY.



HALLWAY UNIT:
Place for keeping work and everyday clothing.

VG Hallway
↔ 45/50/60
↓ 195/210/225
↖ 60



PRACTICAL INTERNAL PULL-OUT:
This way, gloves, scarves, and hats are well stored and always within reach.

VGA Hallway unit with interior pullout
↔ 45/50/60
↓ 195/210/225
↖ 60



SHOE CUPBOARD:
Plenty of space for shoes – on the shelves and the shoe holders on the inside of the door.

VSL
↔ 60
↓ 195/210/225
↖ 60



REMOVING SHOE ODOUR

Sprinkle a little baking powder or baking soda in the shoes affected and let it work overnight, then tap it out thoroughly. Cat litter, if used in the household, also binds odours – the best way to use it is to fill some into a small fabric pouch and place it in the shoe.



MUTUAL PLEASURE

There are many advantages in using the utility room as an intermediate area for getting changed: dirty sports or work clothing immediately lands in the correct laundry baskets, outdoor footwear is kept out of living areas and everyday work clothes are waiting for every member of the household in one place.

MANHATTAN UNI Quartz grey

*Everything is possible –
depending on the space.*



**SO, WHAT SORT OF UTILITY ROOM
WOULD YOU LIKE TO HAVE?**

This, of course, depends entirely on the space you have and on your personal needs. Some prefer to use it as a storage room for household items, others turn it into a lovely dressing room with numerous drawers providing plenty of space. Just as you please.



**SPACE FOR SOCKS,
LAUNDRY, AND MORE.**

Quickly put away and neatly stored: the generously sized drawers give you immediate access to many small items of clothing, such as socks, underwear and swimwear. This brings systematic organisation to your wardrobes.



FEEL Quartz grey soft mat

Everything cleverly stored away ...

... AND CLEARLY ORGANIZED.

You only have a few square metres? Not a problem. With a couple of clever solutions, even a small utility room can make a big splash. One recommendation here, for example, would be a space-saving laundry base unit – a practical alternative to the laundry sorting unit.



ROLLER SHUTTER UNIT:
Dresser unit with shutter in metallic finish, with a pull-out shelf for conveniently storing household appliances.

HAJ 60
↔ 60
↓ 130
↙ 60

LAUNDRY BASE UNIT:
1 drawer,
1 pullout with 2 laundry baskets.

UWL 60
↔ 60
↓ 75
↙ 60



Everything in the smallest of spaces.

For a particularly smart look, anyone locating their utility room at the far end of the kitchen can hide it away behind a through-door. Perfectly organised, everything has its place on just 5 square metres. Doing the washing, storing food, organising waste for recycling ... it can all be done.

A clean solution is also possible in the bathroom: If no separate room is available, the area for the washing machine and storage can be seamlessly and stylishly integrated into the bathroom.

Hidden behind a kitchen cabinet door, the entrance to a fully equipped utility room opens up.



FEEL White soft mat



Carry on browsing.

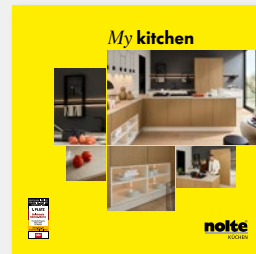
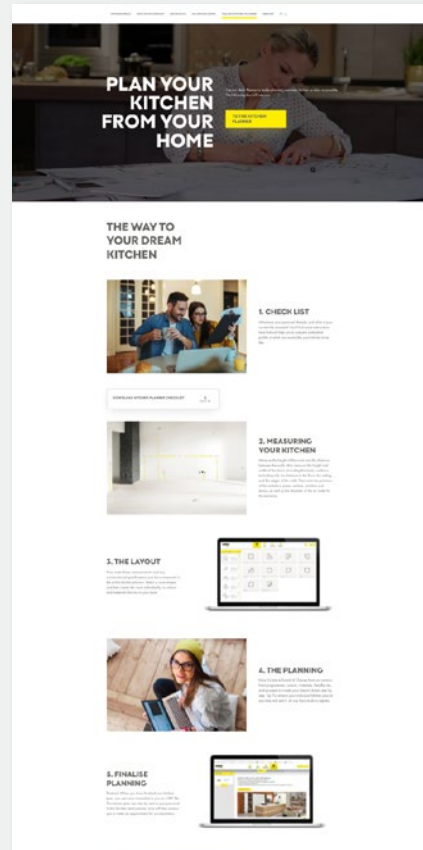
NEWS, TRENDS & INSPIRATIONS.
Don't miss any product innovations, subscribe to the newsletter now!



Plan your kitchen from the comfort of your home with our online kitchen planner!



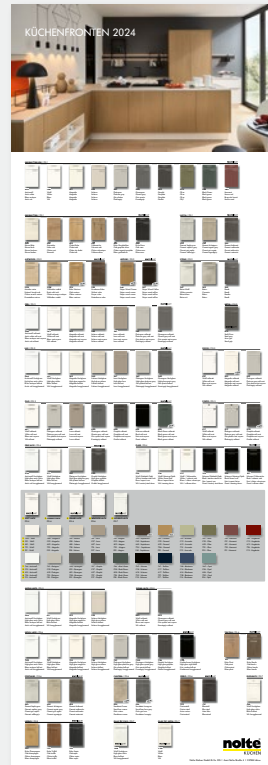
Information material for the perfect planning of your kitchen!



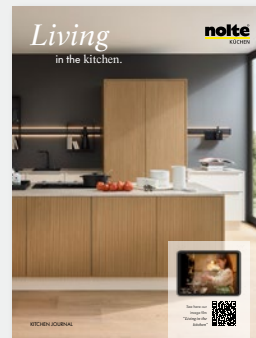
All information for planning the perfect kitchen.



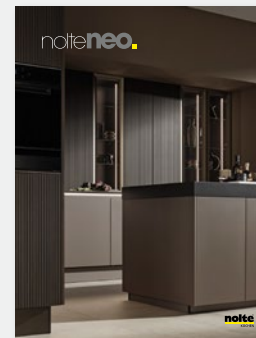
The fastest way to perfect organisation in the kitchen.



Overview of our fronts, colours and decor finishes.



The Nolte Küchen Journal – be inspired!



nolte neo – an extraordinary design.

PLUS Lava soft mat



”

The way we operate today is set to determine the world we leave behind for our future generations. Sustainability is our promise for a better future.

“



Inherent throughout our entire company and its entire value chain, the guiding principle of sustainability is reflected in everything we do and the way we think. It is firmly embedded in our broad-ranging corporate strategy with a view to achieving lasting improvements for mankind and nature.

OUR COMMITMENT TO ...



THE COMPANY

As a matter of good corporate governance and the associated values, we have established resilient structures, processes and partnerships over a period of many years. High quality; modern aesthetics, sustainability and an attractive price-performance ratio are the factors that are always taken into account in our product range. So, for instance, over 99% of the woods we use complies with the principles of sustainable wood criteria.



THE PEOPLE

Our members of staff are particularly close to our heart. Their dedication, knowledge, experience and curiosity are what define us as Nolte Küchen. For this reason, we are pleased to assist our staff in furthering their development – both on the work side through basic and further training as well as on a private level by respecting and enhancing their work-life balance.



THE ENVIRONMENT

As a company, we have made it our aim to maintain a responsible and sustainable use of natural resources. Thanks to our effective climate management, we are able to manufacture our products in a climate-neutral manner at our two operating bases in Löhne and Melle. The main fuel sources at Nolte Küchen are certified green electricity and our boilers, which operate with offcut wood from production.



THE SOCIETY

Ever since Nolte Küchen was first founded, we have cultivated close ties with the region, and we actively foster its well-being and growth. Social commitment is a tradition for us, and we have placed great emphasis on it from the very first day. We help people and regions in emergency situations, such as educational institutions, associations and foundations that are involved in child protection. Our credo: support is given where support is needed.

The grounds of Nolte Küchen have been home to local bees since the summer of 2023, and they have already brought in their first nectar into their hive. They not only provide delicious honey but are also indispensable pollinators, making a significant contribution to the preservation of many plant species.

Discover here the
**NOLTE
SUSTAINABILITY
REPORT**



The kitchen is the room of rooms.
We probably *live* more,
and more *intensively*,
here than anywhere else in the home.
It is the place where
we meet, where we encounter others.
As family or friends.
As a couple.
We *cook, eat* and *enjoy* ourselves
in the kitchen. And sometimes we have
all the time in the world as we do so.
We argue. And *make up again*.
We read, write, send emails, post messages.
And maybe philosophise a little.
And – quite secretly – the kitchen sets
the rhythm of our day.
Good morning. Then midday. Then evening.
And sometimes night ...
Which is *why we love* the kitchen.

Living in the kitchen. nolte

nolte[®]
KÜCHEN

Nolte Küchen GmbH & Co. KG | Anni-Nolte-Straße 4 | 32584 Löhne | www.nolte-kuechen.com

VF-LIVING-GB

Subject to technical change without notice. Colour shades in this catalogue may sometimes vary slightly from original colours for printing and photographic reasons.

